

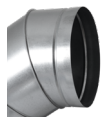
Segmented bends with gaskets

BSL-90



Description

Segmented bends are designed for building ventilation systems based on SPIRAL ducts and plain ducts. They are made of 4 segments; bends in diameters of DN 1120 mm and greater are composed of 5 segments. The segments are fastened by hemming and seaming. The inside surface of the hemmed seams is sealed, and as a result of the double EPDM gaskets, this solution provides air tightness class D according to EN 12237 for ventilation and recuperation systems. The piece is connected with a duct by inserting one into the other. The pieces can be made of 1.4404 stainless steel sheet for ventilation systems in swimming pools.



There is also available version with a female end - **BSFL** code or with two female ends - **BSFF** code.

Available materials - Product code example

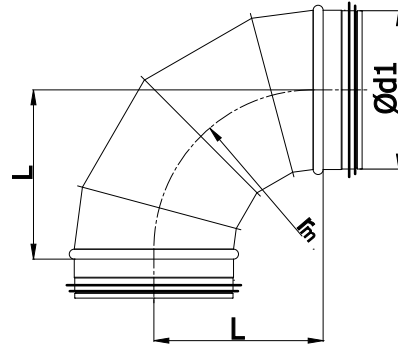
- BSL-... -90 - galvanized steel sheet
- BSL-K-... -90 - 1.4301/304 stainless steel sheet
- BSL-K-... -90-316L - 1.4404/316L stainless steel sheet, molybdenum-enriched
- BSL-A-...-90 - AW-1050A H24 aluminium sheet
- BSL-CU-...-90 - M1E z4 copper sheet
- BSL-ZM-...-90 - ZM310 coating (only up to a diameter of $\varnothing d_1 = 500\text{mm}$)

Product code example

Product code: **BSL - aaa - 90**

type _____
 $\varnothing d_1$ _____
 angle _____

Dimensions



$$r_m \approx 1 \times d_1$$

$\varnothing d_{1, nom}$ (mm)	L (mm)	Weight (kg)
200	200	1.10
224	224	1.32
250	250	1.63
280	280	2.03
300	300	2.30
315	315	2.50
355	355	3.73
400	400	5.10
450	450	8.00
500	500	9.60
560	560	11.80
600	600	13.30
630	630	14.50
710	710	22.40
800	800	28.00
900	900	34.60
1000	1000	43.00
1120	1120	59.80
1250	1250	73.00
1400	1400	90.00
1500	1500	103.40
1600	1600	116.60

Volumetric flow rate q