

# Segmented end caps with gaskets

## CSL



### Description

The end cap is made of segments. The male end on the duct side blinds it at air tightness class D. The end cap rim is long enough to easily secure it with WGO screws without any risk of cutting the gasket's double lip.

#### Available materials - Product code example

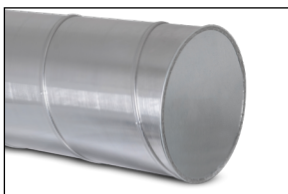
- CSL-... - galvanized steel sheet
- CSL-K-... - 1.4301/304 stainless steel sheet
- CSL-K-...- 316L - 1.4404/316L stainless steel sheet, molybdenum-enriched
- CSL-A-... - AW-1050A H24 aluminium sheet
- CSL-CU-... - M1E z4 copper sheet
- CSL-ZM-... - ZM310 coating (only up to a diameter of  $\varnothing d1 = 500\text{mm}$ )

#### Product code example

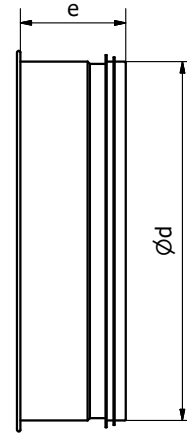
Product code: **CSL - aaa**

type \_\_\_\_\_  
 $\varnothing d$  \_\_\_\_\_

### Installation method



### Dimensions



$\varnothing d_{nom}$ [mm]	Weight [kg]
140	0.10
150	0.20
160	0.20
180	0.30
200	0.30
224	0.30
250	0.60
280	0.60
300	0.70
315	0.90
355	1.20
400	1.20
450	1.80
500	1.70
560	2.20
600	2.60
630	2.80
710	4.50
800	5.40
900	6.60
1000	7.90
1120	10.10
1250	12.20
1400	22.00
1500	25.70
1600	28.80