

# Round shutoff damper

## DASL



### Description

The DASL shutoff damper with EPDM gaskets at both flange connections is designed for cladding with up to 50 mm thick insulation.

The DASL shutoff damper is a good choice when the ductwork closure does not have to be fully airtight. The damper closure position can be read on the 0° to 90° dial of the control handle. The damper closure opening ratio can be fixed with a screw.

All the DASL dampers of diameter 355 mm or greater have the damper closure pivot provided with extra bracing. All the DASL dampers of diameter 450 mm or greater are supplied with the KIT-DS-H damper mechanism control lever. Standard dampers are made from galvanized steel sheet.

#### Available materials - Product code examples

DASL-... - galvanized steel sheet

DASL-K-... - 1.4301/304 stainless steel sheet

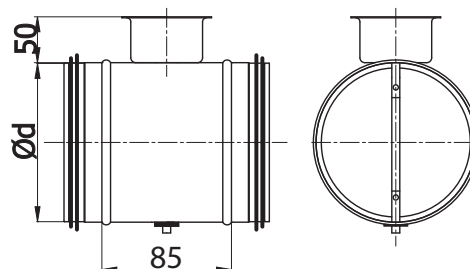
#### Product code example

Product code: **DASL - aaa**

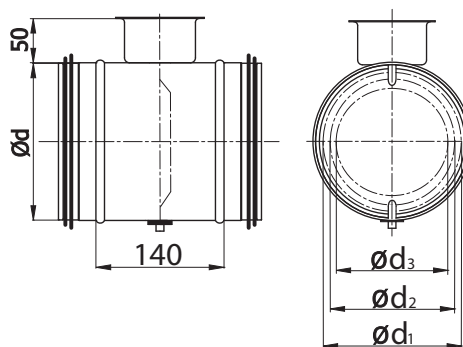
type \_\_\_\_\_  
 $\varnothing d_1$  \_\_\_\_\_

### Dimensions

For  $d_1 < 355$ , the damper closure pivot is mounted on two short rods.



For  $d_1 \geq 355$ , the damper closure pivot is mounted a single long bar.



$\varnothing d_{nom}$ (mm)	$\varnothing d_{1 nom}$ (mm)	$\varnothing d_{2 nom}$ (mm)	$\varnothing d_{3 nom}$ (mm)	Weight (kg)
80*	-	-	-	0.40
100*	-	-	-	0.45
125*	-	-	-	0.55
140*	-	-	-	0.60
150*	-	-	-	0.65
160*	-	-	-	0.70
180*	-	-	-	0.75
200*	-	-	-	0.80
224*	-	-	-	0.90
250*	-	-	-	1.20
280*	-	-	-	1.40
300*	-	-	-	1.50
315*	-	-	-	1.60
355**	330	295	263	2.70
400**	330	295	263	3.30
450**	370	337	293	4.50
500**	370	337	293	5.00
560**	490	457	413	6.30
600**	490	457	413	6.70
630**	490	457	413	7.20

\*with a press-formed damper closure

\*\* with a damper closure & pivot bracing

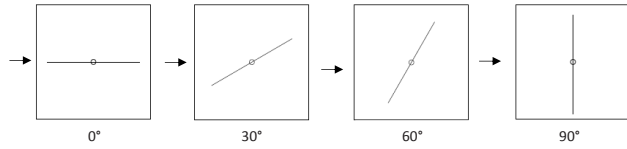
If the damper diameter is to be greater than 630 mm, order the DASQL multi-blade damper.

# Round shutoff damper

## DASL

### Technical specifications

Numbers shown on the diagrams represent the damper blade position according to pictures below:



Q [m<sup>3</sup>/h] - air flow calculated from air velocity and a duct cross-section

Δp [Pa] - pressure loss measured before and after the damper

