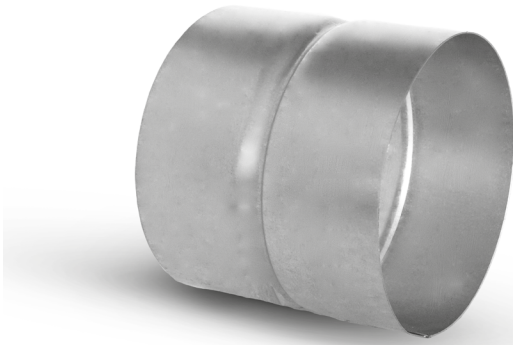
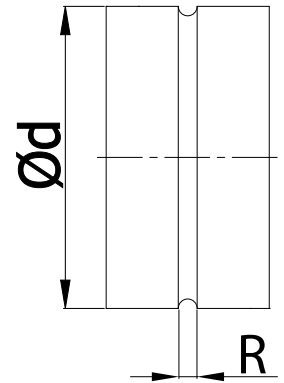


Female couplings for ventilation fittings

MSF



Dimensions



Description

MSF female couplings can be used for connecting round fittings. The Installation method is identical for both gasket-fitted or bare ends. The female end is pressed over the end of a bend, T-piece, damper or reducer and fastened with self-drilling screws or rivets. Joints provided with gasket fittings require no additional sealing. If no gaskets are provided, it is best to seal the joint with a sealing tape.

Available materials - Product code example

- MSF-... - galvanized steel sheet
- MSF-K-... - 1.4301/304 stainless steel sheet
- MSF-K-...-316L - 1.4404/316L stainless steel sheet, molybdenum-enriched
- MSF-A-... - AW-1050A H24 aluminium sheet
- MSF-CU-... - M1E z4 copper sheet
- MSF-ZM-... - ZM310 coating (only up to a diameter of Ød1 = 500mm)

Product code example

Product code: **MSF - aaa**

type _____
 Ød _____

Ød _{nom} [mm]	Stop fold R [mm]	Weight [kg]
80	8	0.08
100	8	0.10
125	8	0.12
140	8	0.14
150	8	0.15
160	8	0.16
180	8	0.18
200	8	0.20
224	8	0.22
250	8	0.24
280	8	0.27
300	8	0.29
315	8	0.30
355	8	0.53
400	8	0.60
450	8	0.90
500	8	1.00
560	8	1.33
600	8	1.43
630	8	1.50
710	10	2.60
800	10	2.95
900	12	3.30
1000	12	5.40
1120	12	6.05
1250	12	6.75
1400	12	8.40
1500	12	9.00
1600	12	9.60